

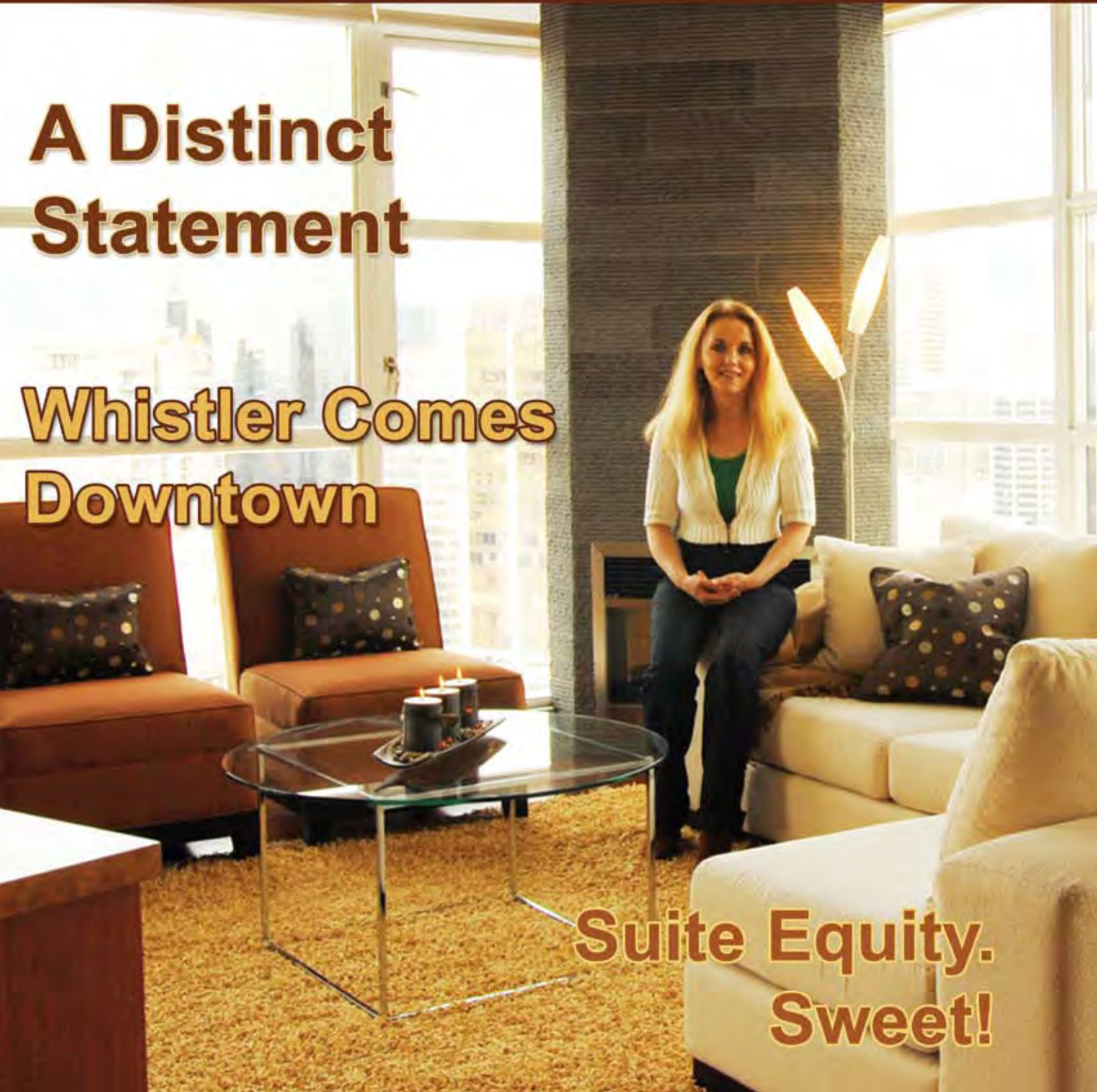
● MAKING DESIGN ● HAPPEN

finito

**A Distinct
Statement**

**Whistler Comes
Downtown**

**Suite Equity.
Sweet!**



A Distinct Statement.



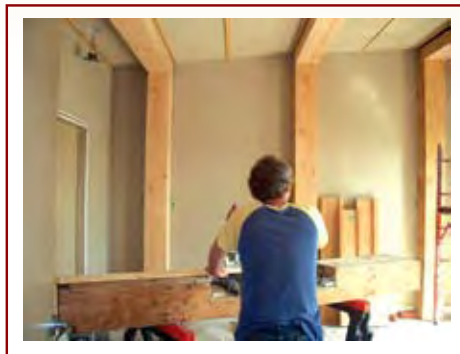
Veronica understood that his lifestyle centered on entertaining clients and guests, always connected to his work while still feeling at home. She decided to unite form and function with a sleek, contemporary look. Elegance with an edge. (Seymour St. Vancouver)



Suite Equity... Sweet!

Designer-Equity

comes from the uniqueness of the designed suite as compared to the developer designs that make up the majority of properties in the condo market. (False Creek. Vancouver)



Whistler Downtown

To bring a Whistler rustic look to his Yaletown condo the elements that jumped out to connect the two were clearly the red brick of Yaletown and the reclaimed fir of Whistler chalets. (Beach Cr. Vancouver)



Even the most straight forward appearing renovation will have unique design requirements and owner preferences. Project managing and coordinating the many independent contractors needed for a design renovation is expensive, time-consuming, and stressful. It requires the coordination of multiple subcontracting firms and dozens of suppliers, each with its own schedule.

On these pages readers will find examples and useful information about what goes into - Making Design Happen. With many interior design projects under my own belt, as well as the collective knowledge of my trades about all facets of residential renovation, chances are FINITO will offer something of interest to most people contemplating a design project.

Veronica Wakeham

Veronica Wakeham



A Distinct Statement.

When Dave purchased his downtown two bedroom condo he knew he had the location and the view. But not the look and feel to make an impression.

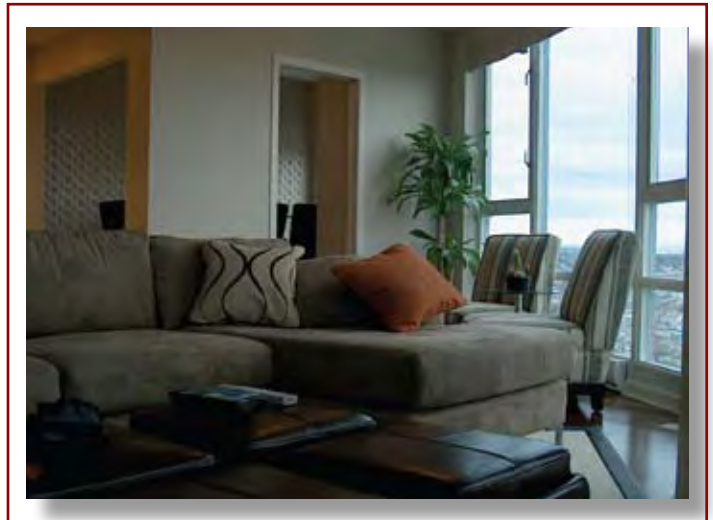
He hired interior designer Veronica Wakeham to transform his suite into a natural extension of who he is - an up and coming professional in the investments industry and considering his move-in deadline, it had to happen fast!

Continued on P.4

Suite Equity... Sweet!

First impressions make lasting ones. But the last impression may be more telling in the case of our former high-tech client, the founding shareholder and CTO of a successful west coast software company.

When he decided to move to Spain and put the False Creek condo which Veronica had designed for him on the market, it was an emotional event. After all, this was his first designer home. He loved it and dreaded parting with it.



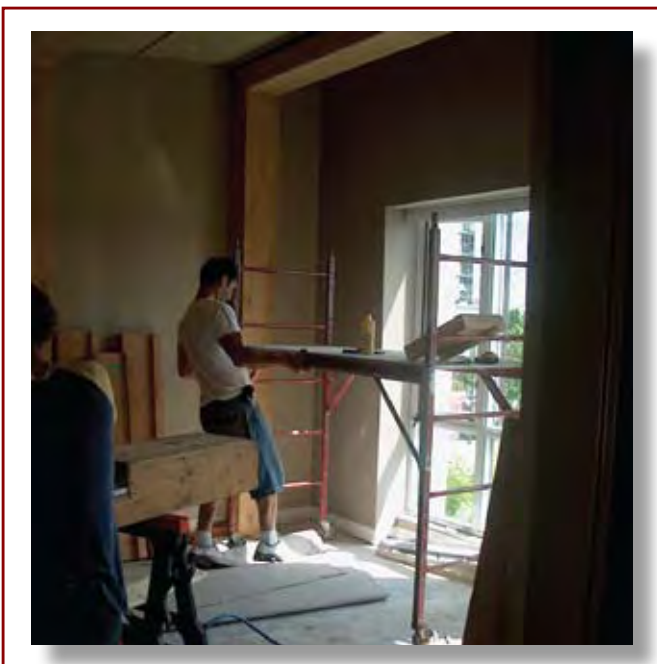
Continued on P.7

Whistler Comes Downtown

Recently a client who had purchased a Yaletown condo, came to Veronica with a request. Bring a little mountain design downtown. In his heart he loved the chateau style of Whistler.

Yaletown is a unique and successful example of urbanization in a heritage area and happens to be the location of Veronica's linen showroom, Terra Nova Linen House. Around Yaletown, significant architectural features still survive to this day: narrow streets, loading docks, railway tracks, but the most appealing and recognizable feature is definitely, red brick.

Continued on P.7



Continued from P.3

After consulting with Dave, Veronica understood that his lifestyle centered on entertaining clients and guests, always connected to his career while still feeling at home. She decided to unite form and function with a sleek, contemporary look. Elegance with an edge.

Removing the guest bedroom wall and turning it into a dining room area set the stage for a living area expansion that enhances the stunning view of the Pacific. Veronica suggested remodelling the triangular pantry that didn't use space efficiently, into an office/bar area with a net gain over the old shelving, (plus a wine fridge),

**“...A sleek,
contemporary
look.
Elegance
with an edge.”**

and a full, modern, uncluttered work station.

The abundant windows presented a challenge to control the light, as well as an opportunity to personalize the space with natural light.



Before



The fireplace was rebuilt to ceiling height with Chisel Bluestone. The added millwork improves the use of space in the living room and gives scale to the living room wall. Thirteen Sheerweave roller shades with cassettes were installed to retain the stunning view of English Bay but allow control of the light to set the mood for whatever the occasion.

Throughout the suite, tile, metal and glass are brought together in perfect

harmony. Corbusier glass tile giving sleekness and texture to the back splash in the kitchen and dining areas.

Removing the guest bath in favour of a shower stall provided even more efficient use of space. Matt white and white gloss subway tile emphasize the linear layout in the shower. Blue Stone and glass in micro dimensions create an intricate design on the ensuite shower wall. Cultured brick on the border and shower base provide a visual transition while the Black Pebbles



treatment in the ensuite shower base provide a natural ground.

The dining table base uses chrome in an innovative way for a pure and innovative design consistent with the square chrome cocktail tables in the living room. Ellis dining chairs offer room for six across the expansive 60" glass top

The Cheers Pendants supplied much needed lighting and fun to the bar area. A ¾" glass countertop with stainless steel hardware elevates the kitchen's casual

dining area which is serviced by three sleek leather bar stools.

“Roller shades retain the view but allow control of the light”

Underfoot, Cherry wood gives warmth and anchors the reflective surfaces. Pommerol Beach tan carpet in the bedroom offers comfort and Desert Gold Polished Slate is carried forward from the kitchen onto both bathroom floors.

After discerning the style and the color that was right for the client, Terra Nova had custom built a Jacob sectional sofa in Thomas coconut, exquisite to touch but durable. Along with the comfort and relaxation of the frame's craftsmanship, the product

Continued on P.6

A Distinct Statement.

is backed by a manufacturer warranty. Two Cheri slipper chairs in Robert Allen Glassy Wave and Espresso base match seamlessly. Outside, the client wanted to relax and take in the breathtaking sunsets. Dedon sofa furniture, water treated wood and water resistant cushions, delivered the perfect solution for Vancouver's coastal climate.

When your client wears designer suits, he expects to use only the finest fabrics in his home. A focal point of

Continued from P.5

**“Micro glass
dimensions
create an
intricate design”**

the bedroom is accomplished with lighting beneath sheer drapery on the headboard wall, a custom upholstered Queen bed, fully closing drapery with blackout lining, Sferra Bros 100% Egyptian cotton sheeting and Kyoto night tables.

The suite was renovated, restyled and ready for Dave's opening gala for friends and associates. By all accounts the new design makes a distinct statement.



Suite Equity...Sweet!

Continued from P.3

For over a year as his friends visited to socialize, he heard again and again the same compliments. The same envious refrain: "I wish my place was like this!" "Who was your designer?" "This place is too cool!"

Buyers could picture themselves living in this home.

Like the comfy furniture, these comments sat well with the owner. But the south of Spain wouldn't wait and even though he told us his mother actually cried when she got the news, the condo had to go on the market.

Back to first impressions.

Studies show that a designed condo makes a strong impression on buyers. Homes are bought on emotion



and as with our client's friends; potential buyers could picture themselves living in this home.

That's a seductive first impression. And likely why the property sold so fast and profitably. In any case, we get the distinct impression that our man's design project paid for itself.

Adios Amigo.

Whistler Comes Downtown

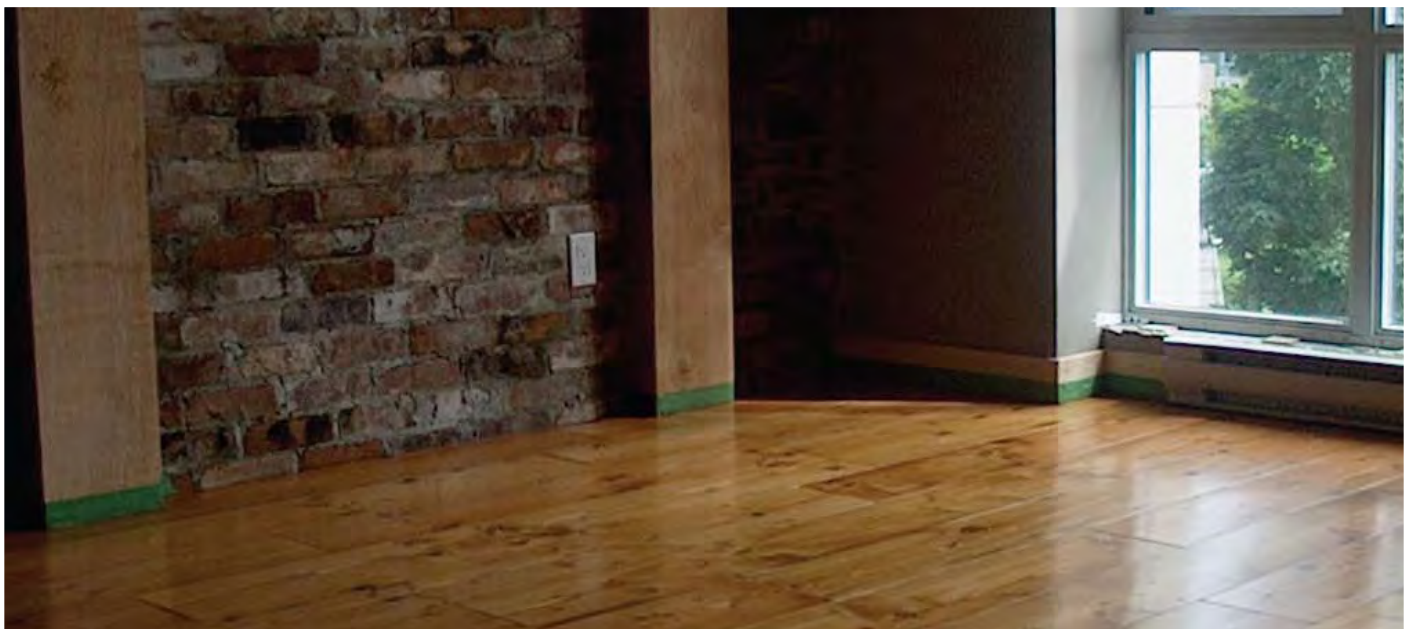
Continued from P.3

When Veronica combined the red brick of Yaletown with rustic plank flooring, she recreated the look and feel of a Whistler Chalet - downtown. For her client, Veronica installed a great-looking floor with a stunning real red brick backdrop. The advantages

speak for themselves - natural beauty, warmth, ease of cleaning. The floor is pre-finished to her specifications. She chose the plank width, finish, colour, species of wood, even the level of distressing. Its durability makes this reclaimed fir a great investment in the

home's overall value.

Practical and timeless, this design's rich character never goes out of style. It just adds a rustic touch to a downtown residence.



After



"When your client wears designer suits, he expects to use only the finest fabrics in his home."



CONTACT INFORMATION

Veronica Wakeham
Terra Nova Linen House
Terra Nova Interiors
106-1120 Hamilton St
Vancouver, BC, Canada
V6B2S2

Tel. 604-688-9280
E-mail. info@threadcounts.com
Web. www.threadcounts.com
Web. www.terranoainteriors.com

Finito